



# GMT MONTHLY MEMBERSHIP PROGRESS REPORT

Results as of: 3/31/2026

Multiple District 22

LOCATION: MARYLAND

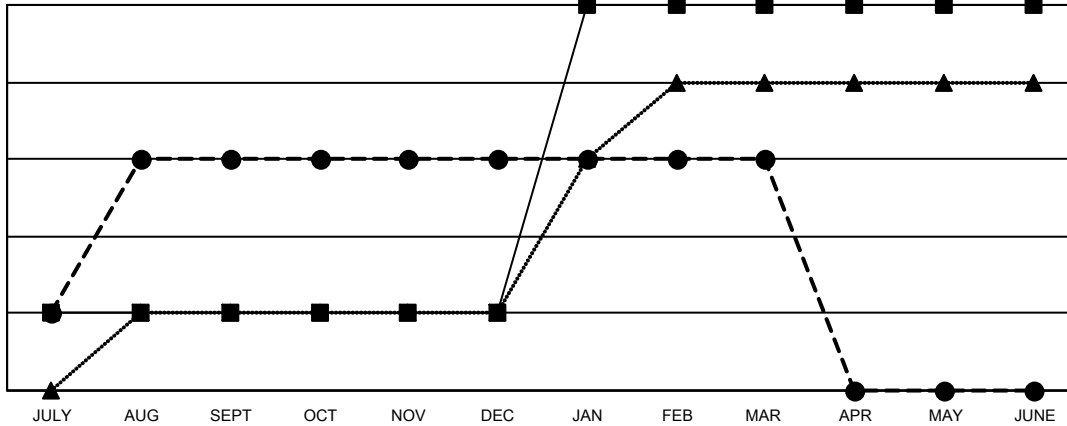
GMT: OPEN

GMT CA 1

Clubs			
RESULTS FOR 2025-2026			
QUARTER	NEW CLUB GOAL	NEW CLUBS	DROPPED CLUBS
JULY/AUG/SEPT	1	3	1
OCT/NOV/DEC	0	0	2
JAN/FEB/MAR	4	0	0
APR/MAY/JUNE	0	0	0

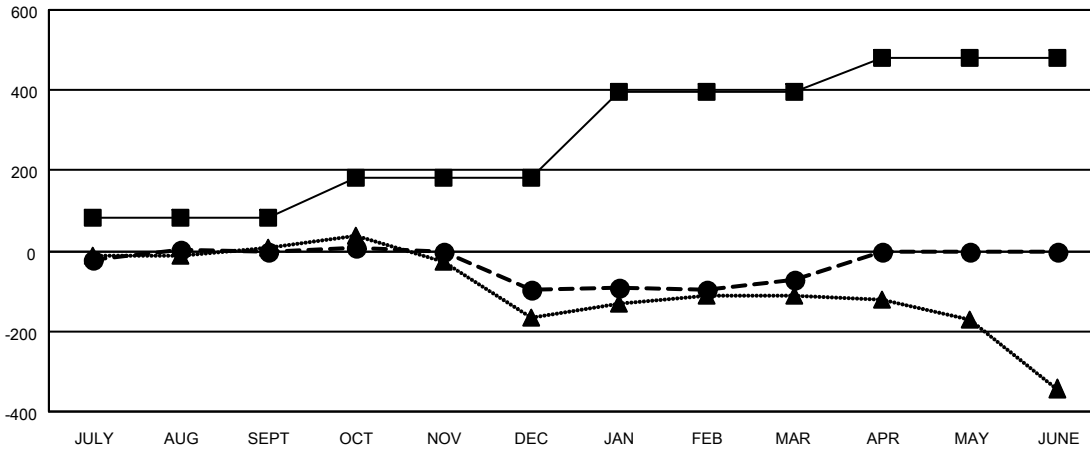
Members			
RESULTS FOR 2025-2026			
QUARTER	MEMBER GROWTH NET GOAL	MEMBER GROWTH ACTUAL	DROPPED MEMBERS ACTUAL (including transfers)
JULY/AUG/SEPT	81	267	198
OCT/NOV/DEC	102	109	193
JAN/FEB/MAR	212	142	88
APR/MAY/JUNE	87	0	0

GOALS AND ACTUAL NEW CLUBS CUMULATIVE



- - CURRENT YEAR GOALS FOR NEW CLUBS
- - CURRENT YEAR ACTUAL NEW CLUBS
- ▲ - LAST YEAR ACTUAL NEW CLUBS

GOALS AND ACTUAL MEMBERS CUMULATIVE



- - MEMBER GROWTH NET GOAL
- - MEMBER GROWTH ACTUAL
- ▲ - LAST YEAR MEMBERSHIP ACTUAL

DROPPED CLUBS: 3	
<b>DROPPED MEMBERS</b>	
DECEASED	70
CLUB CANCELLED	28
OTHER	379
<b>TOTAL</b>	<b>477</b>

99 CLUBS OF 194 ADDED 1 OR MORE NEW MEMBERS

GENDER DISTRIBUTION	
MALE	3,324 (59.90%)
FEMALE	2,225 (40.10%)

[CLICK HERE FOR CUMULATIVE MEMBERSHIP DATA](#)

TOTAL FAMILY UNIT MEMBERS	1,096
FAMILY MEMBERS PAYING HALF DUES	571